

Case Study

Zoopla and uSwitch

Customer Elior Group HQ in Egée Tower

Location Paris, France

Equipment Excel Category 6_A U/FTP 1x4p and 2x4p Cabling, Environ SR Racks, Excel Enbeam Fibre Optic OM3 Cabling, Excel PDUs, 9,000 toolless butterfly-style keystone jacks with all the connectivity and accessories.

Customer's View "Elior Group Headquarters made the decision to move into new offices in the Egée Tower across 15 floors (from 24th to 39th), and wanted to ensure a smooth transition so as not to disturb the day-to-day operations of the company within the fast-moving and competitive food services industry. With the installer, GTIE Tertiaire, being an accredited Excel Cabling Partner, Elior Group was confident that the Excel solution would satisfy all requirements of the project, which had been designed specifically with the Group's transformation plan in mind. Among other things, the plan focussed on accelerating business growth into wider international markets, optimising costs and supporting operational excellence. The high performance, quality reputation and renowned reliability of the Excel product portfolio were critical in the Excel products being the chosen solution for this project."

excel
without compromise.

Elior Group is a global player in the contracted food and support services industry. As the caterer of choice in the world of business, education, healthcare, travel and leisure, they operate in 16 countries as a leader in their main markets; Europe, North America and Latin America. In keeping with the Group's 2016-2020 Strategic Plan, the Group plans to bring their activities under the same roof in the Egée Tower in a bid to offer a collaborative, innovative and ergonomic workplace designed to foster team spirit and optimise efficiency.

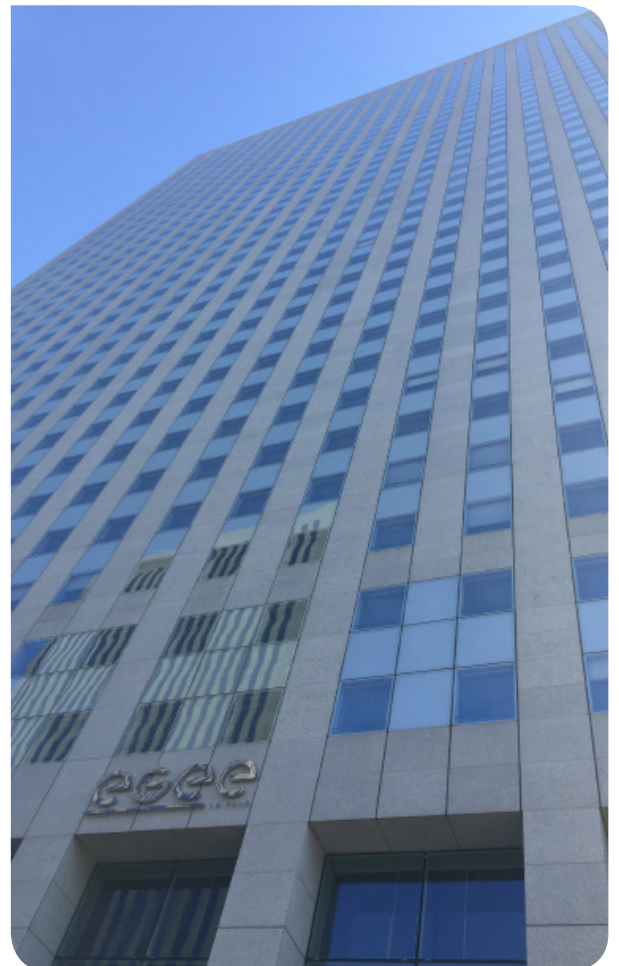
The Requirement

To optimise the performance of the organisation to exceed customer expectations in a competitive and fast-moving industry, by installing a brand new cabling system with top quality products.

Sourcing a Partner

GTIE Tertiaire is a general contractor in electrical works who have been operating in the Parisian region for a number of years. With experience in a diverse range of markets (energy networks, lighting, security, fire detection and centralised technical management), GTIE Tertiaire have a strong level of expertise to produce high quality installations.

Having been an accredited Excel Cabling Partner for a number of years, GTIE Tertiaire are also entitled to a 25 year warranty for all their installations, providing piece of mind to clients such as Elior Group. Having worked with Excel's comprehensive range of products for a



number of years, they are up-to-date on the latest additions to the product portfolio and are in a strong position to promote and recommend the full solution as they trust the quality of the Excel product range. With this knowledge of the products and the brand, GTIE Tertiaire was able to specify and install products based on their ability to fulfil the end user requirements.

The Right Product

The nature of the business operations in this project meant that it was essential for the chosen solution to boast end-to-end capability, high quality, reliability and simplicity to install. The Excel solution was chosen for these reasons. With accolades across a diverse spectrum of vertical markets including a host of similar installations in tall office tower environments, the installer and end-user could rest assured that the Excel range was suitable for the purpose.

The product portfolio from Excel constitutes an end-to-end solution where performance and ease of installation are prerequisites. With an emphasis on compatibility and standards compliance from cable to cabinet, reliability and product availability, Excel is the complete trusted solution. With a strict deadline by which Elior Group's employees needed to be transitioned into the new building meant it was crucial that the chosen solution was flexible to meet changing requirements easily, which Excel was. Not only was there a tight timeline for the project, but the offices were also on and above the 24th floor of the Egée Tower, which made the installation trickier, however the versatility of the packaging options of the Excel product portfolio helped to alleviate the difficulties that could have been encountered. What's more, the products are covered by a 25 year warranty because they were installed by an accredited Excel Partner, providing the end user with the assurance that they were receiving a high quality, trusted solution at the right price.

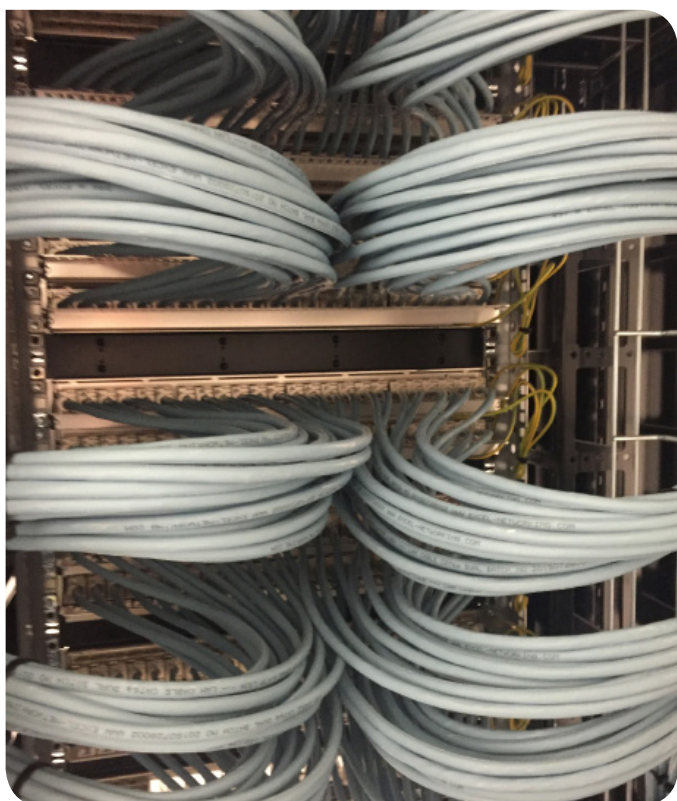


Excel products are Delta verified. Excel has invested in such test and verification programmes for over 15 years, Third party verifications are seen as an independent tick in the box. As well as testing the component and channel, the manufacturing facilities are visited for spot checks to ensure the consistent quality in the manufacturing process. The certification, compliance to standards and full warranty for the installing party contributed to Excel Networking Solutions being chosen as the right product for the project.

Design and Installation

APM, an Excel Distribution Partner and specifier for this project, designed the complete infrastructure solution to meet the requirements of Elior Group. It was crucial that the employees' transition into the new building was as smooth as possible, and that the end result helped to facilitate an improved efficiency of the organisation's various activities through high-speed connectivity across reliable equipment and infrastructure.

Excel Enbeam Fibre Optic OM3 cabling was chosen to support the future proofing of the installation. Excel's OM3 cabling solution has been designed to be compact, lightweight and extremely flexible and simple to install. The cables are constructed around swellable reinforced yarns as common strength members containing up to 24 colour coded 900µm tight buffered fibres, covered with a flame retardant, low smoke zero halogen, outer sheath. Fibre also provides an extremely reliable backbone for data transmission back to the core, whilst also being immune to lots of interference, caused by other services within a building, there are no issues with the data transfer. This was especially important for this project, where the Elior Group offices would sit within the



Egée Tower in amongst other company offices. A solution that supported the reduction of interference and the improved transference of data was vital. The capabilities of the fibre allowed the network to be design to work with the vast size of the facility and installation, giving the ability to offer 1000BASE-SX (Gigabit) Ethernet in the backbone of distances up to 550 meters, or 10GBASE-SR/SW (10 Gigabit) up to 300 meters.

Excel Category 6_A cabling was chosen as it takes the performance capabilities of copper infrastructure to new levels, which was a particular requirement for this project. The cable is designed to exceed the ISO/IEC, TIA and CENELEC for Category 6_A component requirements, delivering high performance over distances of up to 90 meters, which is essential for a site such as this which spreads across 17 floors of an office tower. The new system supports several applications including 10GBASE-T, (10 Gigabit Ethernet) adding to the future proofing nature of the installation. This product also lends it-self to any high definition bandwidth hungry video footage requirement, making it perfect for Unified Communications (UC), where emerging technology can be leveraged to its full potential, within a progressive and forward think company. Each cable consists of two sets of two pairs wrapped together in an "S" configuration with high quality, strong, aluminium/polyester foil tape providing screening for each pair. The "S" Foil configuration ensures separation of the pairs that ensures the performance. The individual pairs are set to different lay lengths to ensure optimum performance.

9,000 Excel Category 6_A Keystone Jacks were loaded into 230 unloaded Excel patch panel frames. A rear management tray with purposely designed cable tie positions is supplied with each panel for added longevity and protection of the installed cabling. These accessories perfectly accompanied the Excel Environ ER Racks that housed the installation in the Egée Tower Comms Room, protecting the infrastructure equipment and keeping the connections safe and secure in a locked environment thanks to the dedicated Environ Locking Solution. The ER Series offers 600Kg load rating, and exceptional mounting space allowing the installation to house the structured cabling and accompanying switches, servers or networking equipment. The Environ ER Racks were complemented by 110 Excel PDUs, which are each composed

of 8 NFC (French Style) plug sockets. Horizontally mounted into the Environ cabinets for a higher density solution, the PDU units supported the appropriate management and distribution of power across the entire installation.

The duration of the project lasted from March until October 2016. Given this tight timeline, it was important that the installation was accurate and professionally finished with minimal interruptions, hence the accredited installer being chosen to ensure maximum project efficiency and allow for employees to be able to "move in" to their new premises by August. This was not achieved without its challenges; there were delays on completing the renovation of the comms room, which inevitably caused a delay to the installation of the racks and consequently the remaining equipment and accessories. However, despite these adversities, the project was completed on time, and the 1,200 staff members were able to situate themselves in the new offices by October 2016, benefitting from high-speed connectivity, minimal interference and complete efficiency in terms of networking.

The Result

Following the successful installation of the Excel products into the designated Egée Tower office areas, Elior Group has transitioned 1,200 employees over 15 floors of the Egée Tower in the La Défense business district of Paris. This transition encompasses the move of three of the Group's core activities; Elior France, the contract catering brand (Business & Industry, Education and Healthcare), Areas (France and Northern Europe), the concession catering brand, and Elior Services. Furthermore, Elior France, in conjunction with up-market brand Arpège, will manage all the inter-company catering activities in the Tour Égée. The catering spaces and concepts will be accessible all day long to meet the demand of all employees occupying the 15 floors of the tower building. Elior has also set up a room service for VIPs attending meetings and to accommodate working lunches, as well as a catering service for the Tour Égée business center.



Excel House
Junction Six Industrial Park
Electric Avenue
Birmingham B6 7JJ
England

T: +44 (0) 121 326 7557
F: +44 (0) 121 327 1537
E: sales@excel-networking.com

www.excel-networking.com

excel
without compromise.